



Rotafix® Ltd is a SME private limited company based in South Wales. It is a market leader in the development and application of specialist adhesives, grouts and coatings for the construction industry.

Rotafix® Ltd was established in 1974; at this time the company developed its own epoxy resin based, solvent free, adhesives, grouts and coating systems which are used for the repair and restoration of all types of structures. An example of this is the diamond drilling methods and masonry anchor grout used for fixing some 30,000 high performance resin anchors along the Thames Embankment for use in conjunction with the Thames Flood Barrier.

The company ceased contracting work in 1985 in order to concentrate on the manufacture and supply of its specialist repair materials and to

allow it to develop systems and methodologies for the repair and restoration of decayed and fractured structural timber.

The Rotafix® patented Timber Repair Splice (TRS) Unit is an example of the output of this development work. This unit and associated repair methodologies are recognized as a cost effective restoration and repair method for decayed timber beam ends. In addition to supplying materials to the construction industry the company offers specialist training to contractors, in particular for the restoration of historic building fabric including timber.

Rotafix® offer on site surveys, strength grading of timber, and repair methodologies for contracts including material specification and costing.



Repairs may be carried out to

- Joists
- Lintels
- Tie-Beams
- Rafters
- Bressumers
- Wall Plates
- Posts
- Wind Turbine Blades
- Glulam Beams
- Lock Gates

Advantages:

Replacement of decayed timber with treated, structurally connected, resin bonded TRS units.

No other method comes close to this level of specification: the repair has greater structural strength than the parent timber, yet provides the visual and practical advantages of the original in terms of shape, appearance, location, and ease of fixing (floor boards and ceilings).

Benefits:

- * Saving valuable timber
- * Reducing the amount of adjacent building works
- * Restoring better than original stiffness and fire resistance
- * Providing a cosmetic result that can be as good as original
 - * Supporting the load in the original wall socket
 - * Saving ceilings
 - * Standard costings

See Rotafix Resiwood System Product Data Sheet at www.rotafix.co.uk

GLULAM BEAM REPAIRS AND STRENGTHENING

Repair and strengthening of Glulam beams utilizing the Rotafix Structural Adhesive (RSA) combined with Rotafix Rotaflex Rods™ can restore the structural integrity of Glulam beams with minimal disruption. Repairs completed with the Rotafix GFRP/Epoxy systems will not only restore the structural capacity but can increase load bearing value up to 20-30% greater than the original design.



COLUMN REPAIRS AND STRENGTHENING

Utilizing the Rotafix Structural Adhesive (RSA) combined with Rotaflex GFRP can restore and strengthen the structural capacity of columns and yet retain the esthetics of exposed finished columns.



RESTORATION OF DECAYED COLUMNS AND BEAMS

Rotafix TG-6 Timber Grout combined with Rotafix RSA/GFRP reinforcement have a 25 year proven track record of replacement and repair of decayed timber. Independently tested in five EEC countries. First choice in Canada, the home of timber structures. Independently tested for one (1) hour fire rating.



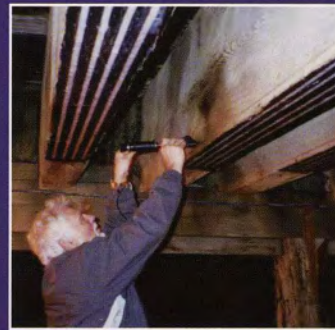
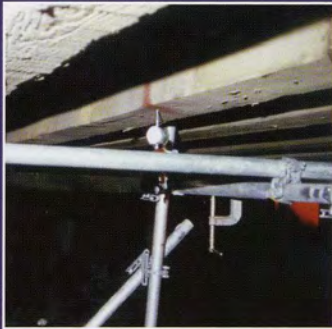
TIMBER BRIDGE REPAIRS AND STRENGTHENING

Utilized in the Canadian market for 11 years, Rotafix RSA adhesive has successfully been applied to numerous bridge strengthening application. Rotafix has been tested in ISIS Canada laboratories for compatibility with creosote treated timers bridge structures for freeze/thaw conditions and adhesive qualities.



QUALITY CONTROL AND QUALITY ASSURANCE

Application for Rotafix Adhesives are evaluated and engineered prior to installation. Moisture testing, load testing and sampling of Rotafix adhesives are part of the Rotafix philosophy to ensure each project meets the required engineered standards for structural repairs.



**Further information and
product data sheets can
be located at
www.rotafix.co.uk**

The Rotafix® Timber-Resin Splice (TRS) system offers the very best method for the repair of in-situ timber joists, wall plates, lintels and structural timbers.

The Rotafix® TRS is a new concept using our original resin technology to enable section of Treated, Strength Graded guaranteed timber (60 years) to be attached onto the original joist or beam. Slots are cut, either from above

or from the side, to accommodate the factory fitted connector rods and then the resin is simply poured in or injected from a standard cartridge.

The assembly is supplied as a kit, complete with the new piece of treated timber fitted with shear connector rods, an appropriate quantity of resin and in a range of standard joist sizes and cut-off lengths.



Engineering Services:

A.F. Eshmade & Associates
Civil and Structural Engineering Consultants
650-125 Garry Street, Winnipeg, Manitoba R3C 3P2
p. 204-942-0039 f. 204-956-0264
www.eshmade.ca

Licensed Contractors:

Concrete Restoration Services Ltd.
77 Paquin Road, Winnipeg, Manitoba R2J 3V9
p. 204-661-6625 f. 204-654-9157
www.concrete-restoration.mb.ca

See Rotafix Resiwood System Product Data Sheet at www.rotafix.co.uk

